

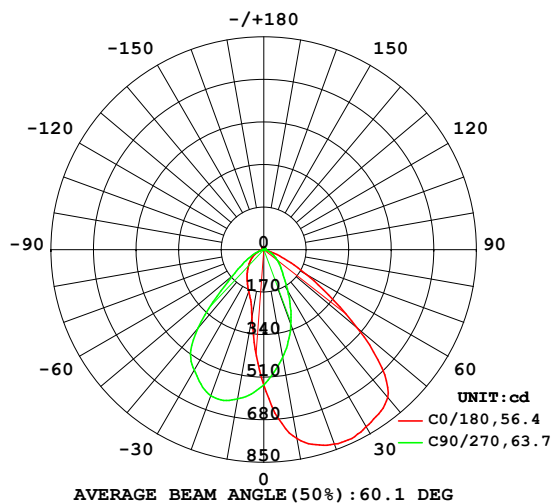
TLO015-51 36V350mA CXA1512-30G-NOY 60.1D 3000K CRI90 NA

## LUMINAIRE PHOTOMETRIC TEST REPORT

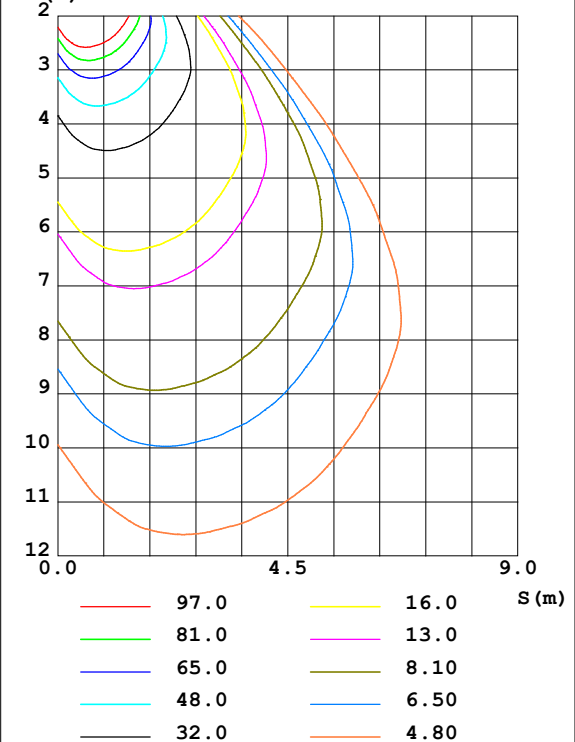
NAME: TLO015-51	TYPE: 60.1D	WEIGHT: 1
SPEC.: 3000K CRI90	DIM.:	SERIAL No.:
MFR.:	SUR.: 52	Shielding Angle:

DATA OF LAMP		PHOTOMETRIC DATA				Eff: 70.14 lm/W
MODEL		I <sub>max</sub> (cd)	832.2	S/MH (C0/180)	0.34	
NOMINAL POWER (W)	15	LOR (%)	100.0	S/MH (C90/270)	1.30	
RATED VOLTAGE (V)	120	TOTAL FLUX (lm)	995.10	η UP, DN (C0-180)	1.2, 45.5	
NOMINAL FLUX (lm)	995.104	CIE CLASS	DIRECT	η UP, DN (C180-360)	1.0, 52.3	
LAMPS INSIDE	1	η up (%)	2.2	CIBSE SHR NOM	0.75	
TEST VOLTAGE (V)	120	η down (%)	97.8	CIBSE SHR MAX	0.95	

LUMINOUS INTENSITY DISTRIBUTION DIAGRAM



C0 PLANE ISOLUX DIAGRAM (UNIT: lx)



C Range: 0 - 360DEG  
C Interval: 22.5DEG  
Test Speed: HIGH  
Temperature: 28DEG  
Operators: CJY  
Test Date: 2024-08-28

γ Range: 0 - 180DEG  
γ Interval: 1.0DEG  
Test System: EVERFINE GO-2000B\_V1 SYSTEM V2.0.401  
Humidity: 65.0%  
Test Distance: 5.190m [K=1.0000]  
Remarks:

TLO015-51 36V350mA CXA1512-30G-NOY 60.1D 3000K CRI90 NA

## ZONAL FLUX DIAGRAM

ZONAL FLUX DIAGRAM:

$\gamma$	C0	C45	C90	C135	C180	C225	C270	C315	$\gamma$	$\Phi$ zone	$\Phi$ total	%lum, lamp
10	766.6	625.8	436.9	307.4	275.6	428.9	605.9	660.1	0- 10	50.09	50.09	5.03,5.03
20	826.6	644.1	317.3	163.7	178.0	309.7	621.2	684.4	10- 20	137.1	187.2	18.8,18.8
30	817.5	570.8	193.6	122.4	134.0	193.9	556.4	673.4	20- 30	202.2	389.4	39.1,39.1
40	771.3	364.2	115.5	91.45	99.79	126.0	408.4	601.3	30- 40	231.3	620.7	62.4,62.4
50	490.1	148.8	76.71	66.34	71.36	84.68	162.4	323.9	40- 50	185.8	806.5	81,81
60	194.5	65.87	45.05	44.38	45.92	51.45	72.34	118.5	50- 60	104.7	911.2	91.6,91.6
70	46.93	19.46	19.96	24.69	23.26	23.85	23.56	22.63	60- 70	46.22	957.4	96.2,96.2
80	2.741	1.799	5.207	9.386	7.743	6.726	2.990	0.4156	70- 80	13.26	970.6	97.5,97.5
90	0.4281	0.4503	0.5262	1.542	1.001	0.4800	0.3693	0.3959	80- 90	2.244	972.9	97.8,97.8
100	0.6847	0.7485	1.175	1.672	2.319	1.005	0.6274	0.6244	90-100	0.8552	973.7	97.9,97.9
110	1.032	1.270	2.372	3.282	4.342	2.125	1.049	0.9249	100-110	1.580	975.3	98,98
120	1.463	2.100	3.871	5.177	6.647	3.645	1.775	1.300	110-120	2.530	977.9	98.3,98.3
130	2.027	3.169	5.323	7.005	8.773	5.215	2.784	1.846	120-130	3.390	981.2	98.6,98.6
140	3.001	4.404	6.439	8.257	10.01	6.427	3.976	2.792	130-140	3.868	985.1	99,99
150	4.565	5.665	6.983	8.723	10.23	7.007	5.185	4.189	140-150	3.783	988.9	99.4,99.4
160	6.514	6.665	7.442	8.937	10.44	7.416	6.190	5.865	150-160	3.184	992.1	99.7,99.7
170	8.421	7.821	8.254	9.136	10.56	8.441	7.239	7.352	160-170	2.207	994.3	99.9,99.9
180	9.967	8.955	8.458	8.728	9.995	8.877	8.447	8.751	170-180	0.8167	995.1	100,100
DEG	LUMINOUS INTENSITY:cd									UNIT:lm		

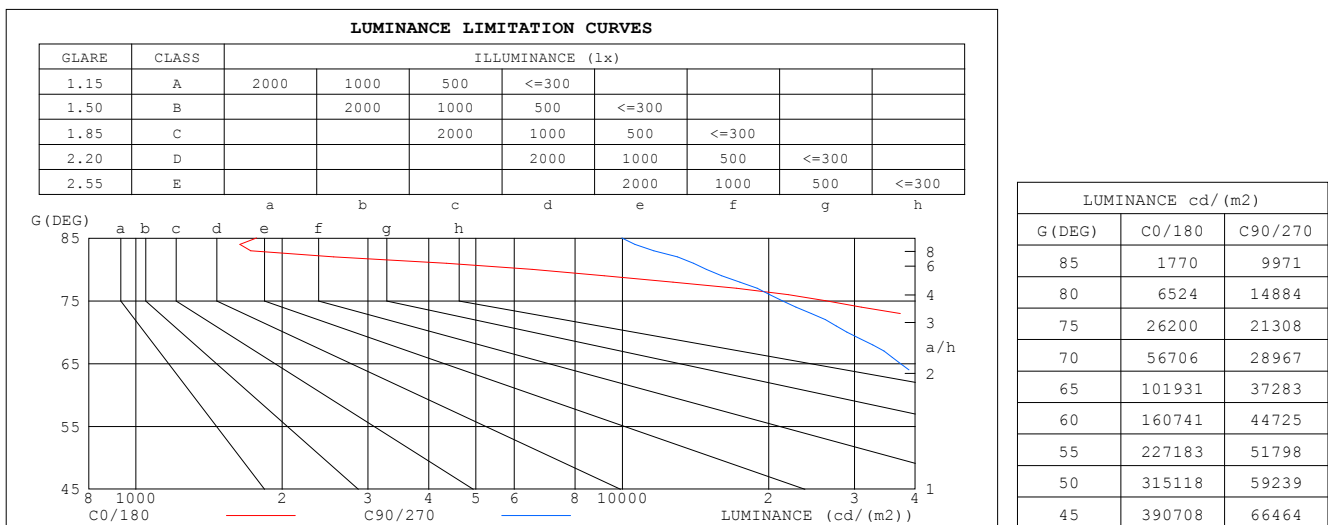
C Range: 0 - 360DEG  
 C Interval: 22.5DEG  
 Test Speed: HIGH  
 Temperature:28DEG  
 Operators:CJY  
 Test Date:2024-08-28

$\gamma$  Range: 0 - 180DEG  
 $\gamma$  Interval: 1.0DEG  
 Test System:EVERFINE GO-2000B\_V1 SYSTEM V2.0.401  
 Humidity:65.0%  
 Test Distance:5.190m [K=1.0000]  
 Remarks:

TLO015-51 36V350mA CXA1512-30G-NOY 60.1D 3000K CRI90 NA

### LUMINANCE LIMITATION CURVES

NAME: TLO015-51	TYPE: 60.1D	WEIGHT: 1
SPEC.: 3000K CRI90	DIM.:	SERIAL No.:
MFR.:	SUR.: 52	Shielding Angle:



C Range: 0 - 360DEG  
C Interval: 22.5DEG  
Test Speed: HIGH  
Temperature: 28DEG  
Operators: CJY  
Test Date: 2024-08-28

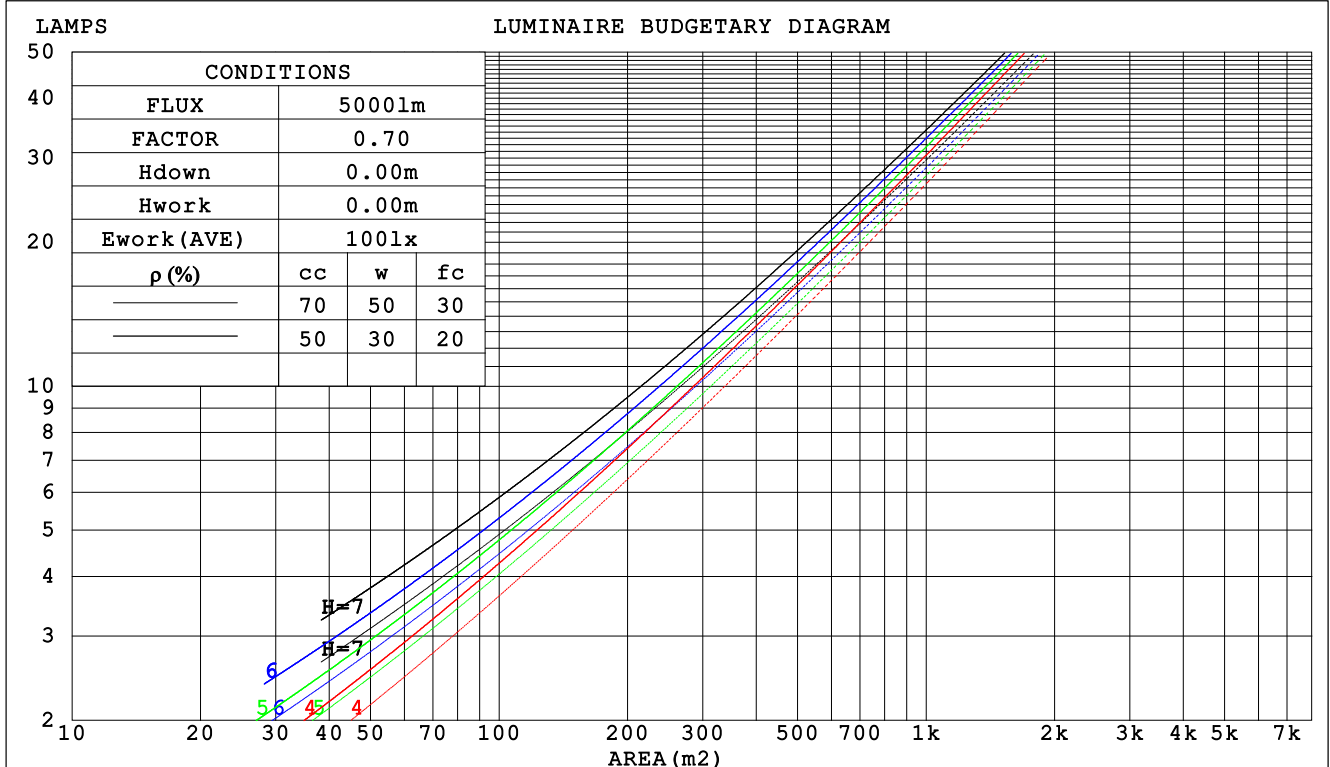
γ Range: 0 - 180DEG  
γ Interval: 1.0DEG  
Test System: EVERFINE GO-2000B\_V1 SYSTEM V2.0.401  
Humidity: 65.0%  
Test Distance: 5.190m [K=1.0000]  
Remarks:

TLO015-51 36V350mA CXA1512-30G-NOY 60.1D 3000K CRI90 NA

## CU AND LUMINAIRE BUDGETARY ESTIMATE DIAGRAM

NAME: TLO015-51	TYPE: 60.1D	WEIGHT: 1
SPEC.: 3000K CRI90	DIM.:	SERIAL No.:
MFR.:	SUR.: 52	Shielding Angle:

$\rho_{cc}$	80%			70%			50%			30%			10%			0
$\rho_w$	50%	30%	10%	50%	30%	10%	50%	30%	10%	50%	30%	10%	50%	30%	10%	0
$\rho_{fc}$	20%			20%			20%			20%			20%			0
RCR	RCR:Room Cavity Ratio			Coefficients of Utilization(CU)												
0.0	1.19	1.19	1.19	1.16	1.16	1.16	1.10	1.10	1.10	1.05	1.05	1.05	.00	.00	.00	.98
1.0	1.07	1.04	1.01	1.05	1.02	.99	1.00	.98	.96	.96	.94	.92	.92	.91	.89	.87
2.0	.97	.91	.87	.95	.90	.85	.91	.87	.83	.87	.84	.81	.84	.81	.79	.77
3.0	.87	.80	.75	.85	.79	.74	.82	.77	.73	.79	.75	.71	.77	.73	.70	.68
4.0	.79	.71	.66	.77	.71	.65	.75	.69	.64	.72	.67	.63	.70	.66	.62	.60
5.0	.72	.64	.58	.70	.63	.58	.68	.62	.57	.66	.61	.56	.64	.59	.56	.54
6.0	.65	.58	.52	.64	.57	.52	.62	.56	.51	.61	.55	.51	.59	.54	.50	.48
7.0	.60	.52	.47	.59	.52	.46	.57	.51	.46	.56	.50	.46	.54	.49	.45	.43
8.0	.55	.47	.42	.54	.47	.42	.53	.46	.42	.52	.46	.41	.50	.45	.41	.39
9.0	.51	.43	.38	.50	.43	.38	.49	.43	.38	.48	.42	.38	.47	.41	.38	.36
10.0	.47	.40	.35	.47	.40	.35	.46	.39	.35	.44	.39	.35	.44	.38	.34	.33



C Range: 0 - 360DEG  
C Interval: 22.5DEG  
Test Speed: HIGH  
Temperature: 28DEG  
Operators: CJY  
Test Date: 2024-08-28

$\gamma$  Range: 0 - 180DEG  
 $\gamma$  Interval: 1.0DEG  
 $\gamma$  Test System: EVERFINE GO-2000B\_V1 SYSTEM V2.0.401  
Humidity: 65.0%  
Test Distance: 5.190m [K=1.0000]  
Remarks:

TLO015-51 36V350mA CXA1512-30G-NOY 60.1D 3000K CRI90 NA

### WEC AND CCEC

NAME: TLO015-51	TYPE: 60.1D	WEIGHT: 1
SPEC.: 3000K CRI90	DIM.:	SERIAL No.:
MFR.:	SUR.: 52	Shielding Angle:

pcc	80%			70%			50%			30%			10%			0
pw	50%	30%	10%	50%	30%	10%	50%	30%	10%	50%	30%	10%	50%	30%	10%	0
pfc	20%			20%			20%			20%			20%			0
RCR	RCR:Room Cavity Ratio						Wall Exitance Coefficients (WEC)									
0.0																
1.0	.234	.133	.042	.226	.129	.041	.212	.122	.039	.199	.115	.037	.187	.109	.035	
2.0	.228	.125	.038	.221	.122	.038	.209	.116	.036	.198	.111	.035	.187	.106	.033	
3.0	.217	.116	.035	.212	.113	.034	.201	.109	.033	.191	.105	.032	.182	.101	.031	
4.0	.206	.107	.031	.201	.105	.031	.191	.101	.030	.182	.098	.030	.174	.095	.029	
5.0	.194	.099	.029	.190	.097	.028	.181	.094	.028	.173	.092	.027	.166	.089	.027	
6.0	.184	.092	.026	.180	.091	.026	.172	.088	.026	.165	.086	.025	.158	.083	.025	
7.0	.174	.086	.024	.170	.085	.024	.163	.082	.024	.157	.080	.023	.151	.078	.023	
8.0	.164	.080	.023	.161	.079	.022	.155	.077	.022	.149	.075	.022	.143	.074	.021	
9.0	.156	.075	.021	.153	.074	.021	.147	.073	.021	.142	.071	.020	.137	.069	.020	
10.0	.148	.071	.020	.145	.070	.020	.140	.069	.019	.135	.067	.019	.131	.066	.019	

pcc	80%			70%			50%			30%			10%			0	
pw	50%	30%	10%	50%	30%	10%	50%	30%	10%	50%	30%	10%	50%	30%	10%	0	
pfc	20%			20%			20%			20%			20%			0	
RCR	RCR:Room Cavity Ratio						Ceiling Cavity Exitance Coefficients(CCEC)										
0.0	.207	.207	.207	.177	.177	.177	.121	.121	.121	.070	.070	.070	.022	.022	.022		
1.0	.192	.174	.158	.164	.149	.136	.112	.103	.094	.065	.059	.055	.021	.019	.018		
2.0	.181	.149	.123	.155	.129	.106	.106	.089	.074	.061	.052	.043	.020	.017	.014		
3.0	.172	.131	.099	.147	.113	.086	.101	.079	.060	.058	.046	.036	.019	.015	.012		
4.0	.164	.117	.082	.140	.101	.071	.097	.071	.050	.056	.041	.030	.018	.013	.010		
5.0	.156	.107	.070	.134	.092	.061	.092	.064	.043	.054	.038	.026	.017	.012	.008		
6.0	.150	.098	.061	.129	.085	.053	.089	.059	.038	.051	.035	.022	.017	.011	.007		
7.0	.143	.091	.054	.123	.079	.047	.085	.055	.033	.050	.033	.020	.016	.011	.007		
8.0	.138	.085	.049	.119	.074	.043	.082	.052	.030	.048	.031	.018	.015	.010	.006		
9.0	.132	.080	.045	.114	.070	.039	.079	.049	.028	.046	.029	.017	.015	.009	.006		
10.0	.127	.076	.042	.110	.066	.037	.076	.046	.026	.044	.027	.015	.014	.009	.005		

C Range: 0 - 360DEG  
C Interval: 22.5DEG  
Test Speed: HIGH  
Temperature: 28DEG  
Operators: CJY  
Test Date: 2024-08-28

γ Range: 0 - 180DEG  
γ Interval: 1.0DEG  
Test System: EVERFINE GO-2000B\_V1 SYSTEM V2.0.401  
Humidity: 65.0%  
Test Distance: 5.190m [K=1.0000]  
Remarks:

TLO015-51 36V350mA CXA1512-30G-NOY 60.1D 3000K CRI90 NA

UGR(Unified Glare Rating) Table

NAME: TLO015-51					TYPE: 60.1D			WEIGHT: 1		
SPEC.: 3000K CRI90					DIM.:			SERIAL No.:		
MFR.:					SUR.: 52			Shielding Angle:		
ceiling/cavity	0.7	0.7	0.5	0.5	0.3	0.7	0.7	0.5	0.5	0.3
walls	0.5	0.3	0.5	0.3	0.3	0.5	0.3	0.5	0.3	0.3
working plane	0.2	0.2	0.2	0.2	0.2	0.2	0.2	0.2	0.2	0.2
Room dimensions	Viewed crosswise					Viewed endwise				
x = 2H y = 2H	32.0	33.3	32.3	33.5	33.8	25.5	26.7	25.8	27.0	27.2
3H	32.1	33.3	32.4	33.5	33.8	25.7	26.9	26.1	27.1	27.4
4H	32.1	33.2	32.4	33.4	33.7	25.8	26.9	26.1	27.1	27.4
6H	32.0	33.0	32.3	33.3	33.6	25.7	26.8	26.1	27.1	27.4
8H	31.9	32.9	32.3	33.2	33.5	25.7	26.7	26.1	27.0	27.3
12H	31.9	32.8	32.2	33.1	33.5	25.7	26.6	26.0	26.9	27.3
4H 2H	31.8	32.9	32.2	33.2	33.5	25.9	27.0	26.2	27.3	27.5
3H	31.9	32.9	32.3	33.2	33.5	26.2	27.1	26.6	27.4	27.8
4H	31.9	32.7	32.3	33.1	33.5	26.2	27.1	26.6	27.4	27.8
6H	31.8	32.5	32.2	32.9	33.3	26.2	27.0	26.6	27.3	27.7
8H	31.8	32.4	32.2	32.8	33.3	26.2	26.9	26.6	27.3	27.7
12H	31.7	32.3	32.2	32.8	33.2	26.2	26.8	26.6	27.2	27.7
8H 4H	31.8	32.4	32.2	32.8	33.3	26.2	26.8	26.6	27.2	27.7
6H	31.7	32.2	32.1	32.7	33.1	26.2	26.7	26.6	27.2	27.6
8H	31.6	32.1	32.1	32.6	33.1	26.1	26.6	26.6	27.1	27.6
12H	31.6	32.0	32.1	32.5	33.0	26.1	26.5	26.6	27.0	27.5
12H 4H	31.7	32.3	32.2	32.8	33.2	26.1	26.7	26.6	27.2	27.6
6H	31.6	32.1	32.1	32.6	33.1	26.1	26.6	26.6	27.1	27.6
8H	31.6	32.0	32.1	32.5	33.0	26.1	26.5	26.6	27.0	27.5
Variations with the observer position at spacings:										
S = 1.0H	+ 1.1 / - 1.6					+ 1.6 / - 1.8				
1.5H	+ 2.2 / - 4.2					+ 1.5 / - 1.6				
2.0H	+ 4.2 / - 5.4					+ 1.3 / - 1.7				

CIE Pub.117, 995.1 lm Total Lamp Luminous Flux Correct (8log(F/F0) = -0.0)

C Range: 0 - 360DEG  
C Interval: 22.5DEG  
Test Speed: HIGH  
Temperature: 28DEG  
Operators: CJY  
Test Date: 2024-08-28

γ Range: 0 - 180DEG  
γ Interval: 1.0DEG  
Test System: EVERFINE GO-2000B\_V1 SYSTEM V2.0.401  
Humidity: 65.0%  
Test Distance: 5.190m [K=1.0000]  
Remarks:

TL0015-51 36V350mA CXA1512-30G-NOY 60.1D 3000K CRI90 NA

## UTILIZATION FACTORS TABLE

NAME: TLO015-51	TYPE: 60.1D	WEIGHT: 1
SPEC.: 3000K CRI90	DIM.:	SERIAL No.:
MFR.:	SUR.: 52	Shielding Angle:

REFLECTANCE										
Ceiling	0.8	0.8	0.8	0.7	0.7	0.7	0.5	0.5	0.5	0
Walls	0.7	0.5	0.3	0.7	0.5	0.3	0.7	0.5	0.3	0
Working plane	0.2	0.2	0.2	0.2	0.2	0.2	0.2	0.2	0.2	0
ROOM INDEX	UTILIZATION FACTORS (PERCENT) $k(RI) \times RCR = 5$									
$k = 0.60$	68	58	52	67	58	52	66	57	52	46
0.80	78	68	62	77	68	62	75	67	62	56
1.00	85	77	71	84	76	71	82	77	70	64
1.25	92	84	78	90	83	78	88	81	77	71
1.50	96	88	83	94	88	83	91	86	81	75
2.00	101	95	90	99	94	89	96	91	87	80
2.50	104	98	94	102	97	93	98	94	91	83
3.00	107	101	97	104	100	96	100	97	94	86
4.00	109	105	102	107	103	100	103	100	97	89
5.00	111	108	105	109	105	103	104	102	99	90
ROOM INDEX	UF(total)									Direct
According to DIN EN 13032-2 2004				Suspended				SHR <sub>NOM</sub> = 1.25		

C Range: 0 - 360DEG  
C Interval: 22.5DEG  
Test Speed: HIGH  
Temperature: 28DEG  
Operators: CJY  
Test Date: 2024-08-28

```

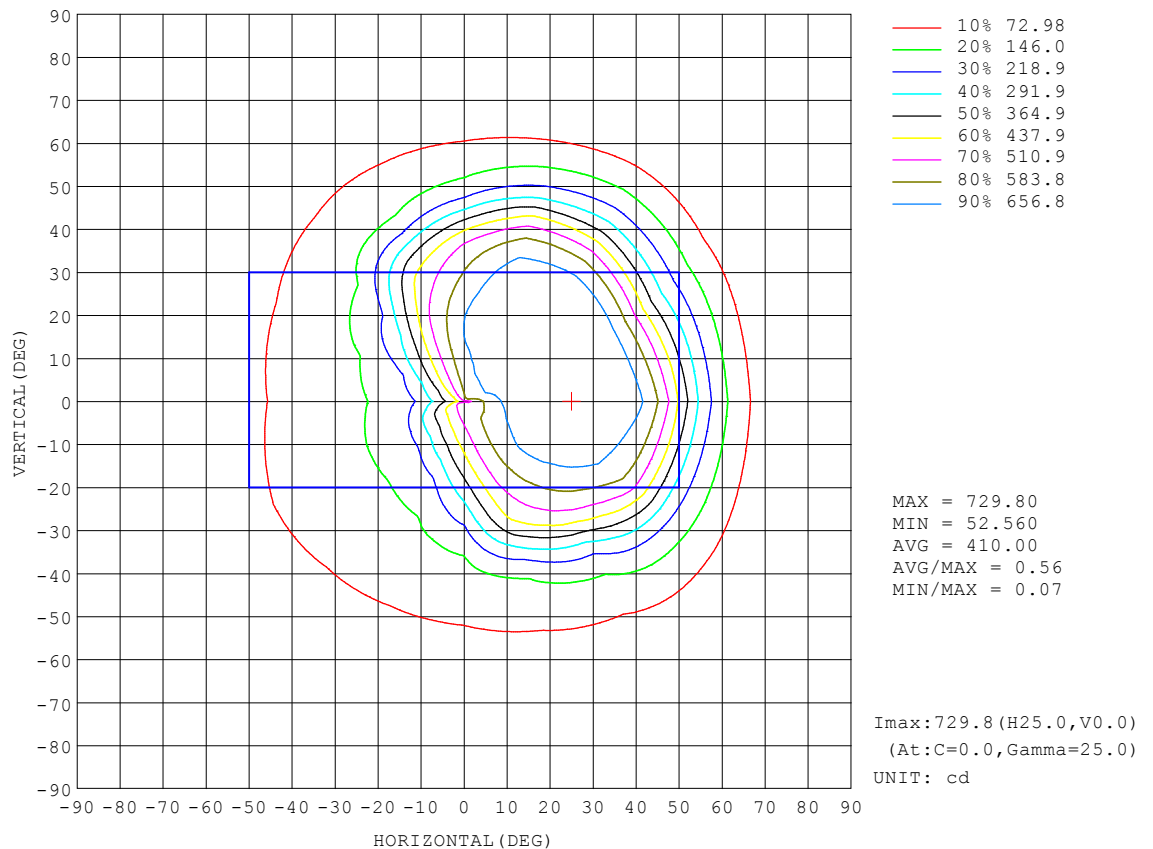
Range: 0 - 180DEG
Interval: 1.0DEG
Test System:EVERFINE GO-2000B_V1 SYSTEM V2.0.401
Humidity:65.0%
Test Distance:5.190m [K=1.0000]
Remarks:

```

TLO015-51 36V350mA CXA1512-30G-NOY 60.1D 3000K CRI90 NA

### ISOCANDELA DIAGRAM

NAME: TLO015-51	TYPE: 60.1D	WEIGHT: 1
SPEC.: 3000K CRI90	DIM.:	SERIAL No.:
MFR.:	SUR.: 52	Shielding Angle:



C Range: 0 - 360DEG  
C Interval: 22.5DEG  
Test Speed: HIGH  
Temperature: 28DEG  
Operators: CJY  
Test Date: 2024-08-28

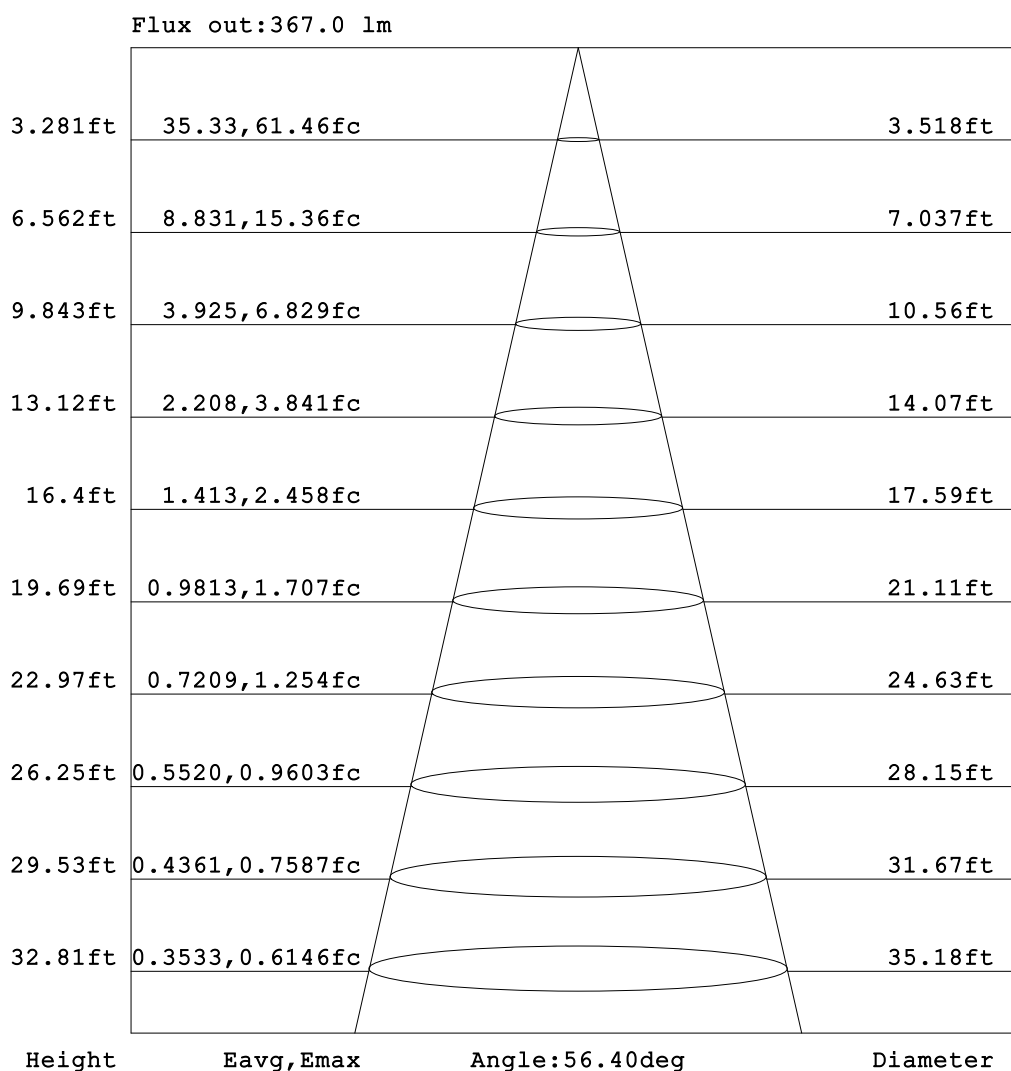
γ Range: 0 - 180DEG  
γ Interval: 1.0DEG  
Test System: EVERFINE GO-2000B\_V1 SYSTEM V2.0.401  
Humidity: 65.0%  
Test Distance: 5.190m [K=1.0000]  
Remarks:



TLO015-51 36V350mA CXA1512-30G-NOY 60.1D 3000K CRI90 NA

### AAI Figure

NAME: TLO015-51	TYPE: 60.1D	WEIGHT: 1
SPEC.: 3000K CRI90	DIM.:	SERIAL No.:
MFR.:	SUR.: 52	Shielding Angle:



Note: The Curves indicate the illuminated area and the average illumination when the luminaire is at different distance.

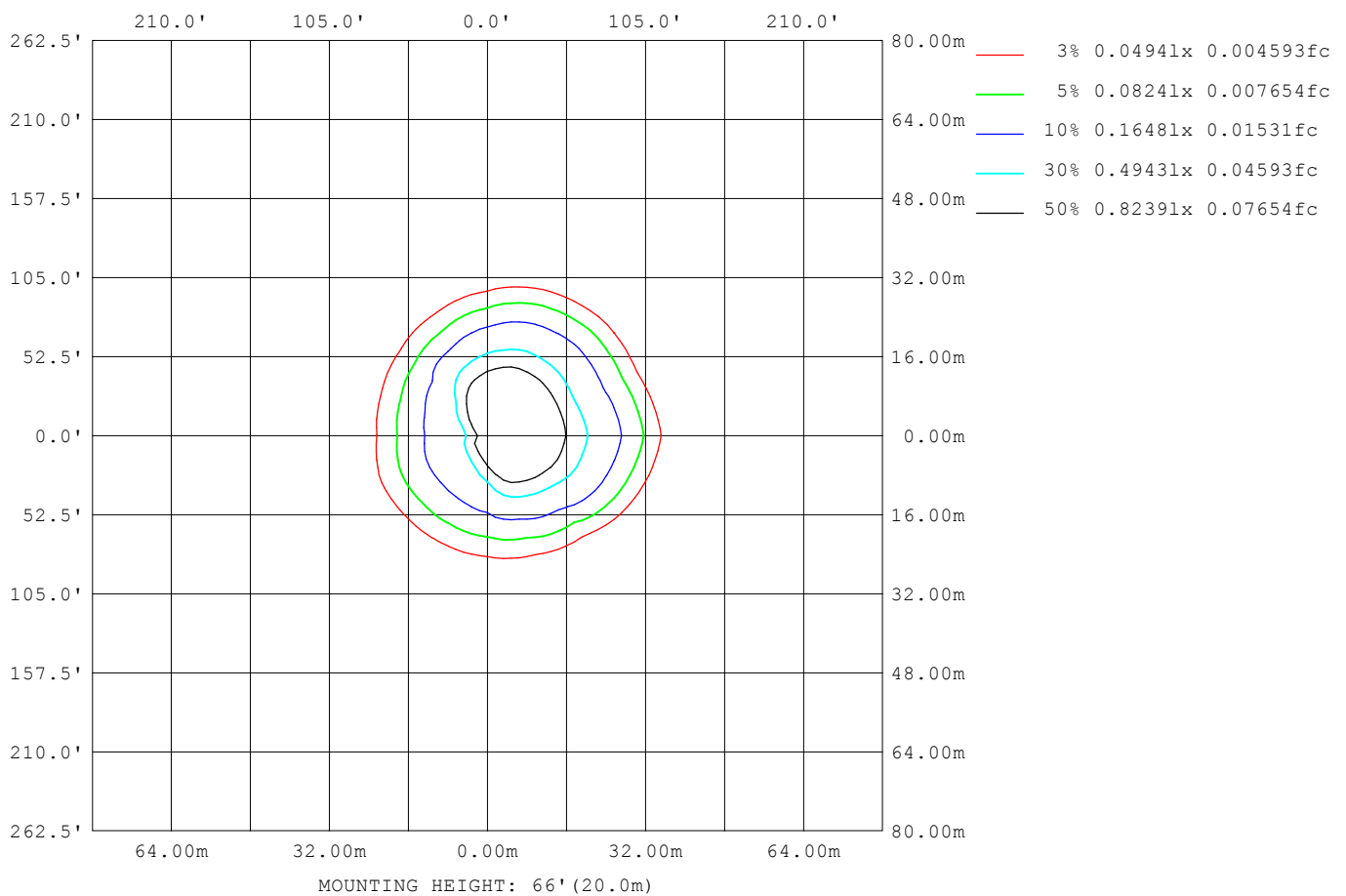
C Range: 0 - 360DEG  
 C Interval: 22.5DEG  
 Test Speed: HIGH  
 Temperature: 28DEG  
 Operators: CJY  
 Test Date: 2024-08-28

γ Range: 0 - 180DEG  
 γ Interval: 1.0DEG  
 Test System: EVERFINE GO-2000B\_V1 SYSTEM V2.0.401  
 Humidity: 65.0%  
 Test Distance: 5.190m [K=1.0000]  
 Remarks:

TLO015-51 36V350mA CXA1512-30G-NOY 60.1D 3000K CRI90 NA

### ISOLUX DIAGRAM

NAME: TLO015-51	TYPE: 60.1D	WEIGHT: 1
SPEC.: 3000K CRI90	DIM.:	SERIAL No.:
MFR.:	SUR.: 52	Shielding Angle:



C Range: 0 - 360DEG  
C Interval: 22.5DEG  
Test Speed: HIGH  
Temperature: 28DEG  
Operators: CJY  
Test Date: 2024-08-28

γ Range: 0 - 180DEG  
γ Interval: 1.0DEG  
Test System: EVERFINE GO-2000B\_V1 SYSTEM V2.0.401  
Humidity: 65.0%  
Test Distance: 5.190m [K=1.0000]  
Remarks:

TLO015-51 36V350mA CXA1512-30G-NOY 60.1D 3000K CRI90 NA

### LED Avg.L Report

NAME: TLO015-51	TYPE: 60.1D	WEIGHT: 1
SPEC.: 3000K CRI90	DIM.:	SERIAL No.:
MFR.:	SUR.: 52	Shielding Angle:

AvgL	cd/m2
L_0~180 (65) av	77107
L_0~180 (75) av	28110
L_0~180 (85) av	9296
L_90~270 (65) av	42349
L_90~270 (75) av	19289
L_90~270 (85) av	5852
L_45 (65) av	46531
L_45 (75) av	19638
L_45 (85) av	10326

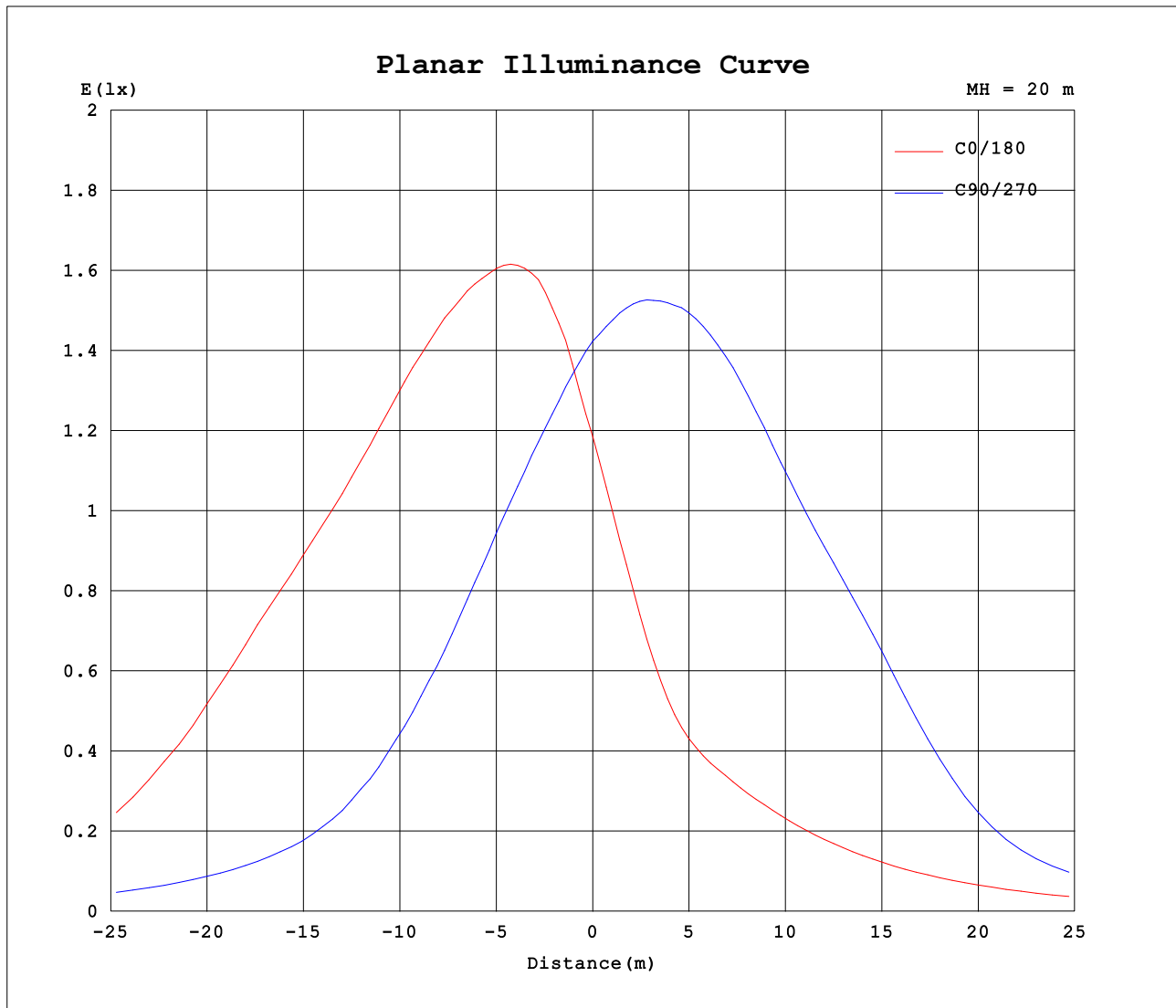
Standard: GB/T 29293-2012

C Range: 0 - 360DEG  
C Interval: 22.5DEG  
Test Speed: HIGH  
Temperature: 28DEG  
Operators: CJY  
Test Date: 2024-08-28

γ Range: 0 - 180DEG  
γ Interval: 1.0DEG  
Test System: EVERFINE GO-2000B\_V1 SYSTEM V2.0.401  
Humidity: 65.0%  
Test Distance: 5.190m [K=1.0000]  
Remarks:

TLO015-51 36V350mA CXA1512-30G-NOY 60.1D 3000K CRI90 NA

## Planar Illuminance Curve



C Range: 0 - 360DEG  
 C Interval: 22.5DEG  
 Test Speed: HIGH  
 Temperature: 28DEG  
 Operators: CJY  
 Test Date: 2024-08-28

γ Range: 0 - 180DEG  
 γ Interval: 1.0DEG  
 Test System: EVERFINE GO-2000B\_V1 SYSTEM V2.0.401  
 Humidity: 65.0%  
 Test Distance: 5.190m [K=1.0000]  
 Remarks:

TLO015-51 36V350mA CXA1512-30G-NOY 60.1D 3000K CRI90 NA

## LUMINOUS DISTRIBUTION INTENSITY DATA

NAME: TLO015-51	TYPE: 60.1D	WEIGHT: 1
SPEC.: 3000K CRI90	DIM.:	SERIAL No.:
MFR.:	SUR.: 52	Shielding Angle:

Table--1

UNIT: cd

C (DEG) γ (DEG)	0	22.5	45	67.5	90	112.5	135	157.5	180	202.5	225	247.5	270	292.5	315	337.5			
0	541	541	541	541	541	541	541	541	541	541	541	541	541	541	541	541			
5	678	640	589	538	489	452	423	414	400	435	487	537	579	608	625	631			
10	767	715	626	533	437	358	307	292	276	331	429	530	606	643	660	666			
15	806	759	650	520	380	269	211	197	207	244	371	522	623	665	678	682			
20	827	782	644	495	317	195	164	160	178	193	310	503	621	682	684	681			
25	832	780	613	464	254	155	141	140	155	166	249	473	593	684	680	669			
30	817	757	571	413	194	133	122	121	134	144	194	435	556	667	673	672			
35	801	714	499	306	147	114	106	106	116	125	155	359	511	626	658	669			
40	771	649	364	188	115	97.4	91.4	92.7	99.8	107	126	238	408	555	601	595			
45	669	516	226	128	94.7	82.4	78.3	80.1	85.1	90.3	104	147	265	426	478	451			
50	490	339	149	96.3	76.7	68.6	66.3	68.4	71.4	75.0	84.7	108	162	264	324	304			
55	315	208	102	72.1	59.9	56.0	55.0	57.7	58.4	60.8	67.3	82.1	109	162	203	199			
60	194	125	65.9	51.1	45.1	44.2	44.4	47.5	45.9	47.5	51.4	59.6	72.3	95.0	118	115			
65	104	68.4	38.3	33.0	31.7	33.3	34.3	37.4	34.1	34.8	36.9	40.2	44.2	49.7	57.5	56.2			
70	46.9	32.7	19.5	18.6	20.0	23.1	24.7	27.3	23.3	23.4	23.9	24.1	23.6	22.2	22.6	20.8			
75	16.4	12.0	7.64	8.89	11.1	14.3	16.2	18.3	14.5	14.0	13.6	12.3	10.1	7.15	5.62	4.62			
80	2.74	2.36	1.80	3.25	5.21	7.66	9.39	11.1	7.74	7.27	6.73	5.12	2.99	1.05	0.42	0.34			
85	0.37	0.36	0.36	0.62	1.75	3.30	4.49	5.65	3.07	2.90	2.48	1.34	0.41	0.29	0.31	0.31			
90	0.43	0.44	0.45	0.48	0.53	0.98	1.54	2.06	1.00	0.75	0.48	0.36	0.37	0.36	0.40	0.39			
95	0.55	0.57	0.58	0.64	0.78	0.95	1.09	1.12	1.54	1.10	0.67	0.50	0.48	0.47	0.50	0.50			
100	0.68	0.71	0.75	0.88	1.18	1.46	1.67	1.70	2.32	1.71	1.01	0.69	0.63	0.59	0.62	0.62			
105	0.85	0.88	0.97	1.24	1.72	2.11	2.42	2.47	3.27	2.47	1.50	0.98	0.81	0.75	0.76	0.76			
110	1.03	1.08	1.27	1.72	2.37	2.87	3.28	3.37	4.34	3.35	2.12	1.39	1.05	0.92	0.92	0.91			
115	1.24	1.31	1.65	2.26	3.10	3.71	4.22	4.36	5.48	4.33	2.85	1.90	1.37	1.14	1.10	1.09			
120	1.46	1.61	2.10	2.87	3.87	4.58	5.18	5.38	6.65	5.33	3.65	2.47	1.78	1.41	1.30	1.28			
125	1.72	1.96	2.61	3.51	4.62	5.44	6.13	6.41	7.76	6.30	4.44	3.10	2.25	1.75	1.54	1.50			
130	2.03	2.40	3.17	4.16	5.32	6.22	7.01	7.37	8.77	7.15	5.21	3.76	2.78	2.17	1.85	1.77			
135	2.44	2.92	3.77	4.80	5.94	6.86	7.73	8.17	9.54	7.79	5.89	4.41	3.37	2.67	2.26	2.13			
140	3.00	3.53	4.40	5.38	6.44	7.33	8.26	8.77	10.01	8.22	6.43	5.01	3.98	3.25	2.79	2.64			
145	3.71	4.24	5.05	5.84	6.78	7.57	8.57	9.17	10.23	8.42	6.79	5.53	4.59	3.89	3.44	3.30			
150	4.56	5.03	5.66	6.24	6.98	7.76	8.72	9.38	10.23	8.51	7.01	5.96	5.19	4.60	4.19	4.10			
155	5.52	5.86	6.20	6.54	7.16	7.93	8.79	9.43	10.27	8.63	7.13	6.29	5.75	5.30	5.01	4.99			
160	6.51	6.67	6.66	6.86	7.44	8.15	8.94	9.47	10.44	8.96	7.42	6.57	6.19	5.98	5.86	5.88			
165	7.53	7.37	7.21	7.35	7.91	8.43	9.10	9.53	10.60	9.38	7.91	7.05	6.67	6.57	6.66	6.77			
170	8.42	8.09	7.82	7.88	8.25	8.63	9.14	9.50	10.56	9.66	8.44	7.62	7.24	7.17	7.35	7.56			
175	9.20	8.83	8.46	8.36	8.48	8.65	9.07	9.28	10.37	9.74	8.87	8.25	7.88	7.85	8.05	8.23			
180	9.97	9.47	8.96	8.54	8.46	8.44	8.73	8.89	10.00	9.52	8.88	8.60	8.45	8.42	8.75	8.84			

C Range: 0 - 360DEG  
C Interval: 22.5DEG  
Test Speed: HIGH  
Temperature: 28DEG  
Operators: CJY  
Test Date: 2024-08-28

γ Range: 0 - 180DEG  
γ Interval: 1.0DEG  
Test System: EVERFINE GO-2000B\_V1 SYSTEM V2.0.401  
Humidity: 65.0%  
Test Distance: 5.190m [K=1.0000]  
Remarks: